

24/7 support:

 (844)-597-8753



Patient Information/ Instruction Sheet

Congratulations!

You are ready to start tracking your vitals with VIP Remote Health's monitoring system!

You have been assigned a patient kit from VIP Remote Health
Containing:



**A SMART BAND &
CHARGER**



**AN FDA APPROVED
BLOOD PRESSURE
MONITOR & CUFF**



**A CROSS BODY
CARRYING BAG**



**A MINI TABLET
& CHARGER**

(includes cell chip,
no wi-fi required)



MINI TABLET STAND



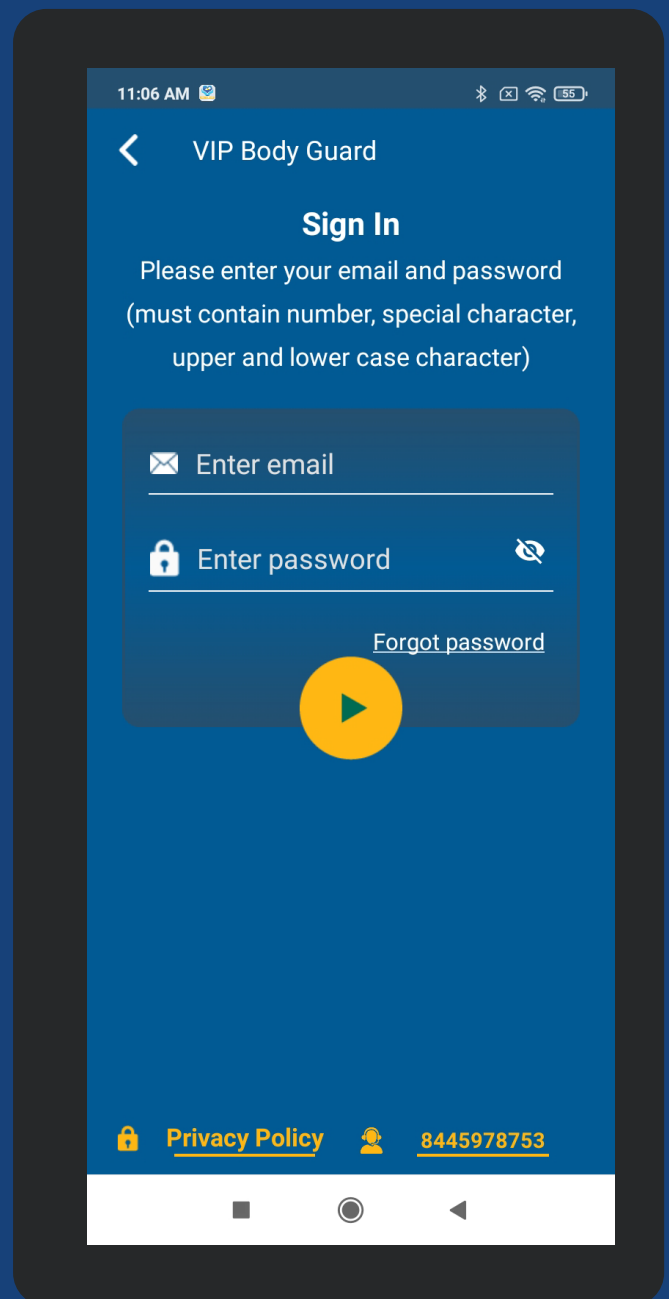
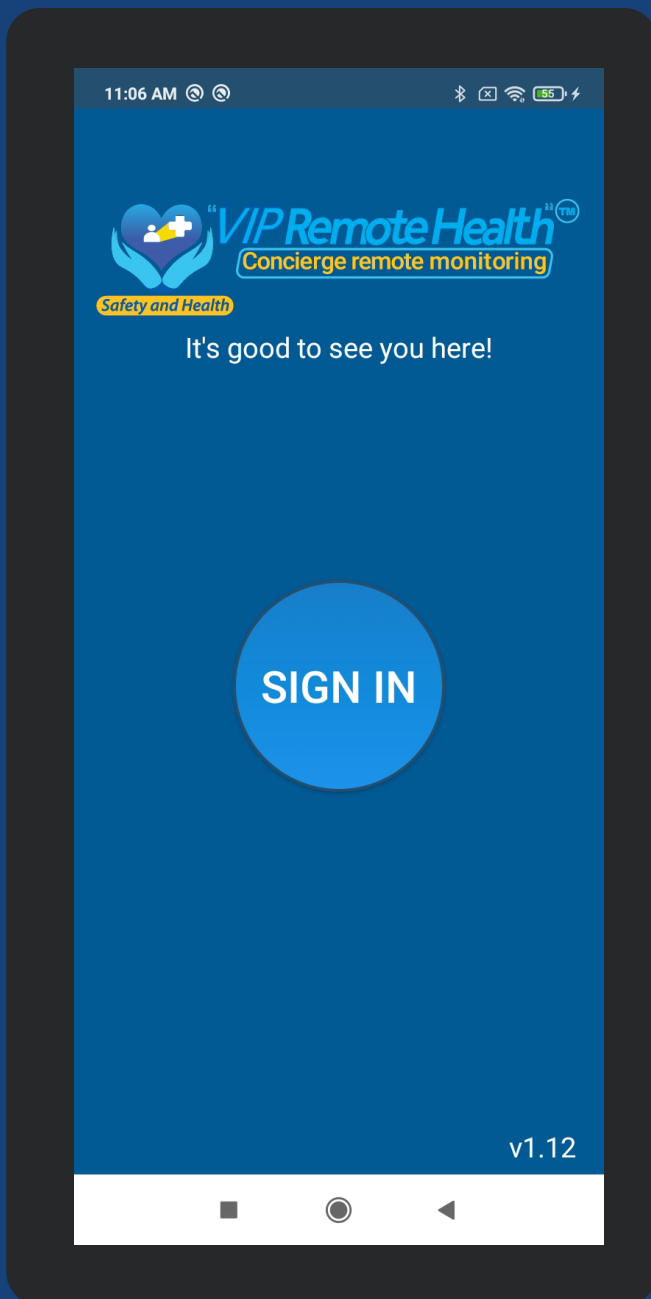
**FDA GLUCOMETER
(IF REQUIRED)**

It is important to check that each item is fully charged before you begin the process.



Step

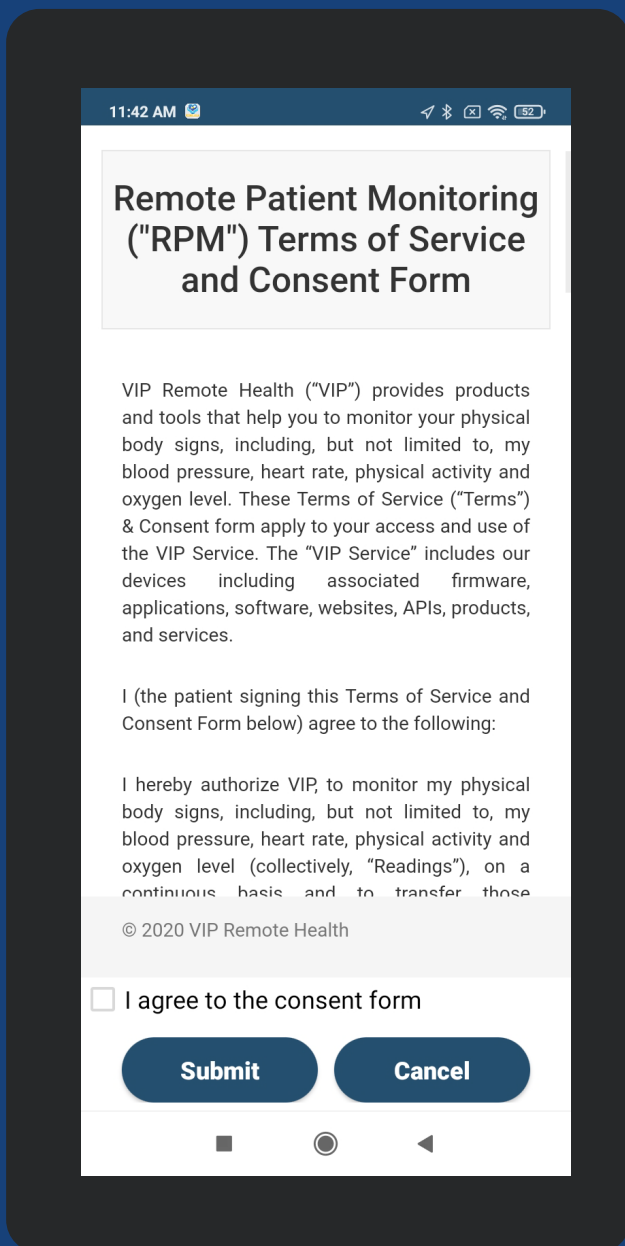
1. Power on the mini tablet and log into the VIP Remote Health app using your patient profile log in information that has been provided to you.



Step

2.

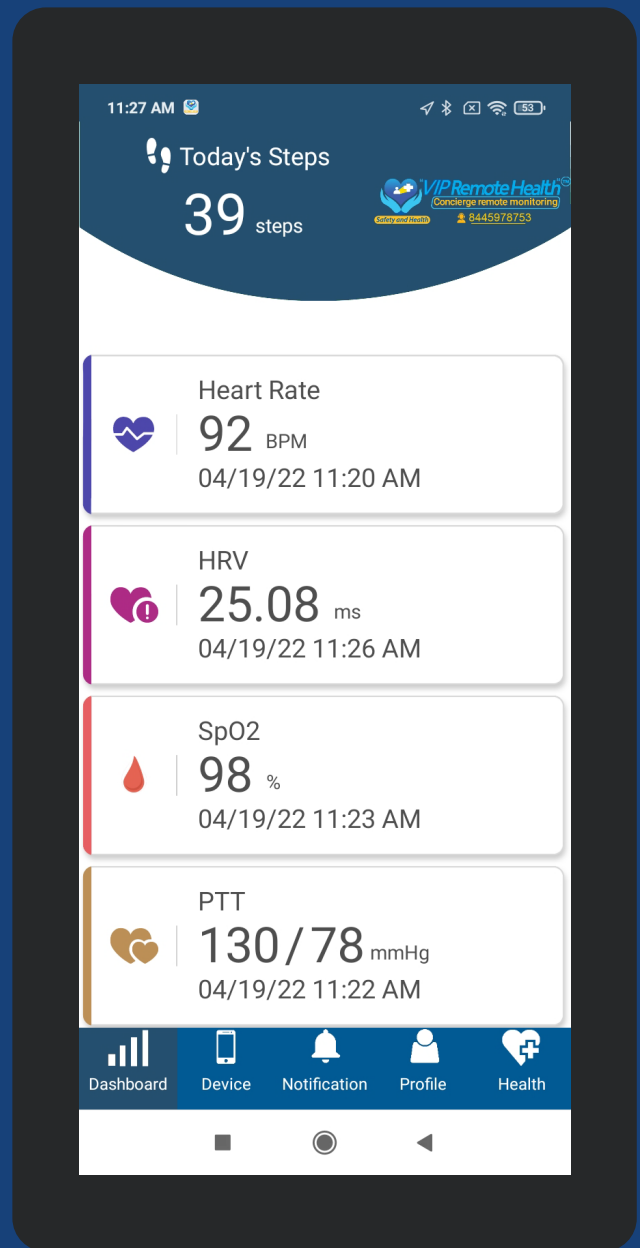
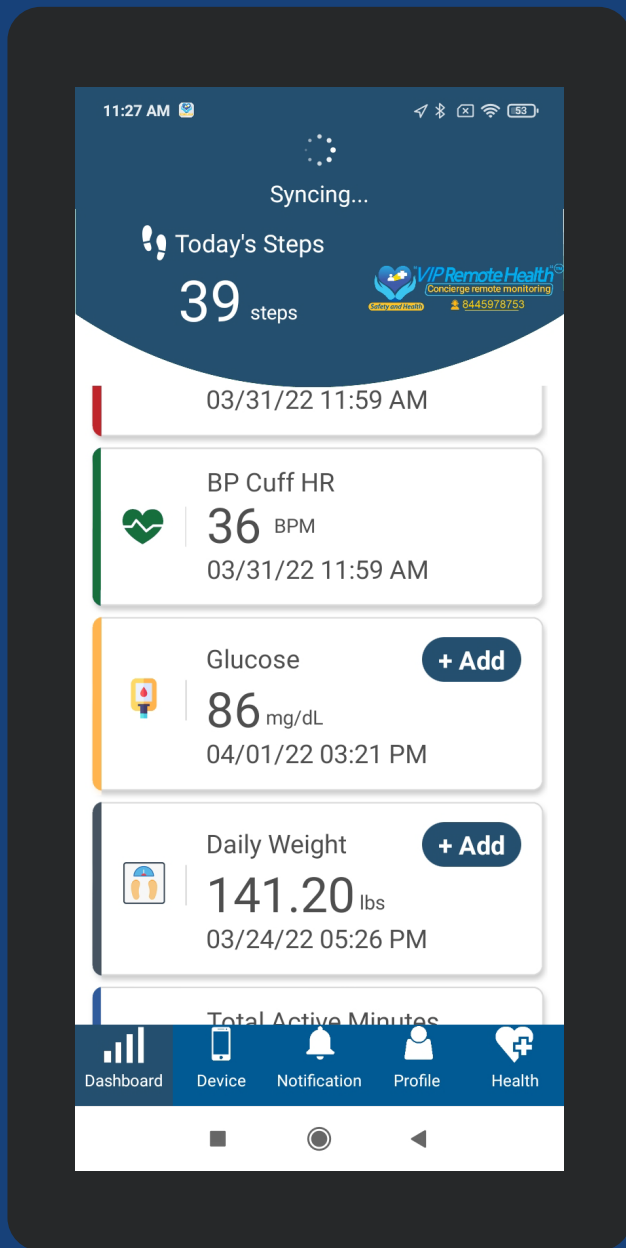
A screen will pop up with the consent form – which is signed electronically.



Step

3.

Once the consent form is signed, a Dashboard screen will appear showing your vitals.



Connecting the blood pressure cuff

(Batteries are included)

Please note the blood pressure monitor/cuff only needs to be connected one-time during set-up.

Bluetooth has already been enabled on the tablet. The blood pressure cuff must be within three feet to connect.

On blood pressure monitor - When BP cuff monitor screen is OFF;



Step 1.

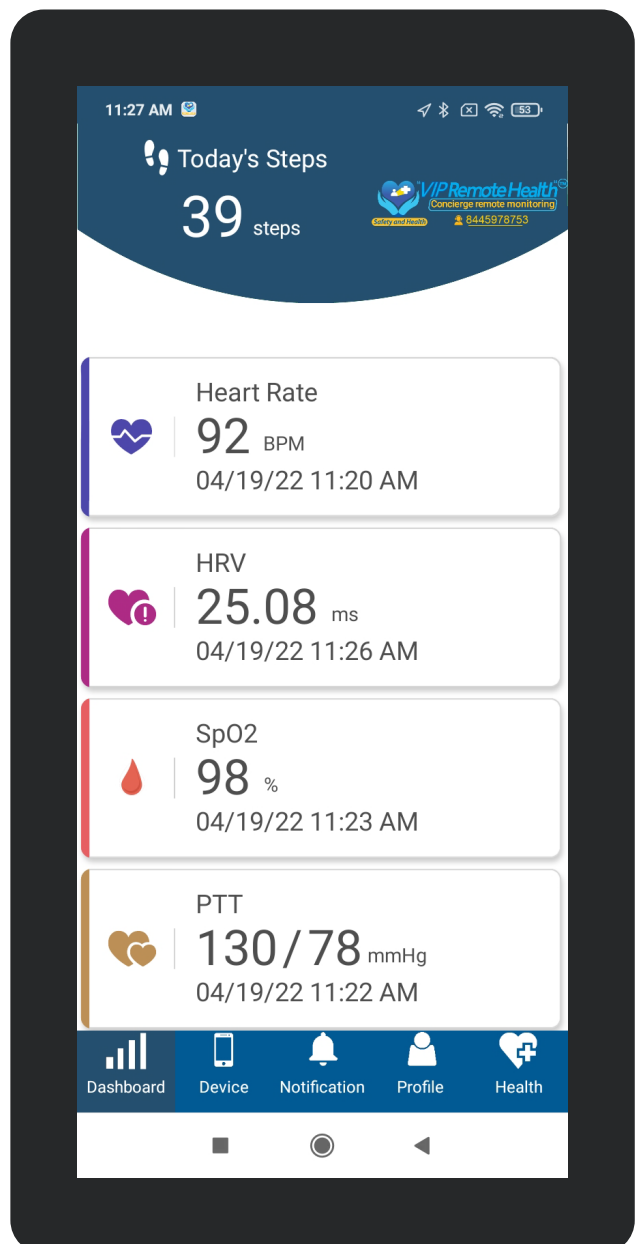
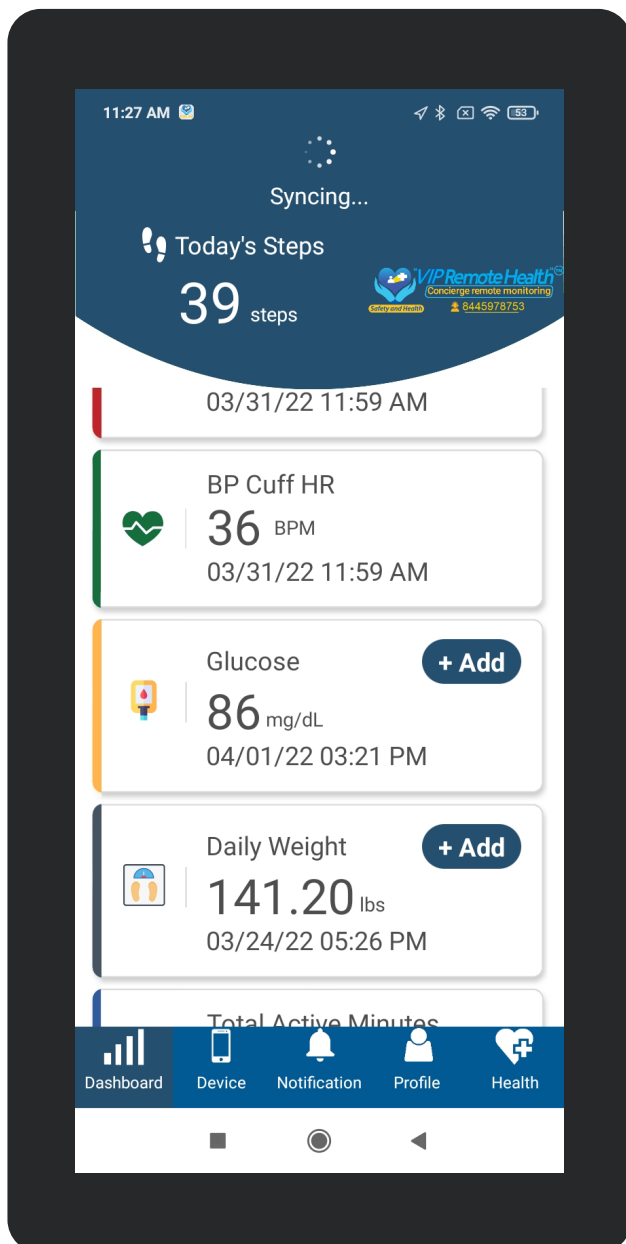
Press and hold the **START /STOP** button until Bluetooth symbol appears

Release the button once you see it. Once released, The Bluetooth symbol will flash.

On the VIP Tablet (while the blood pressure cuff monitor Bluetooth symbol is still flashing.)

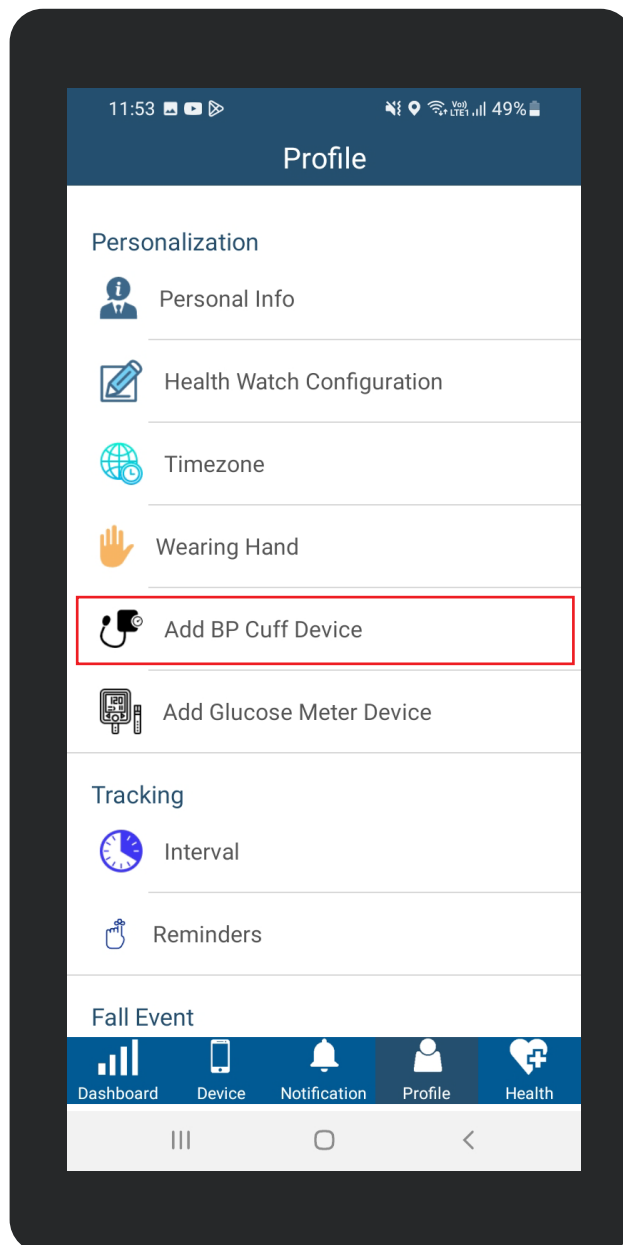
Step 2.

Open the VIP tablet and the VIP screen will show dashboard screen as you have already logged in.



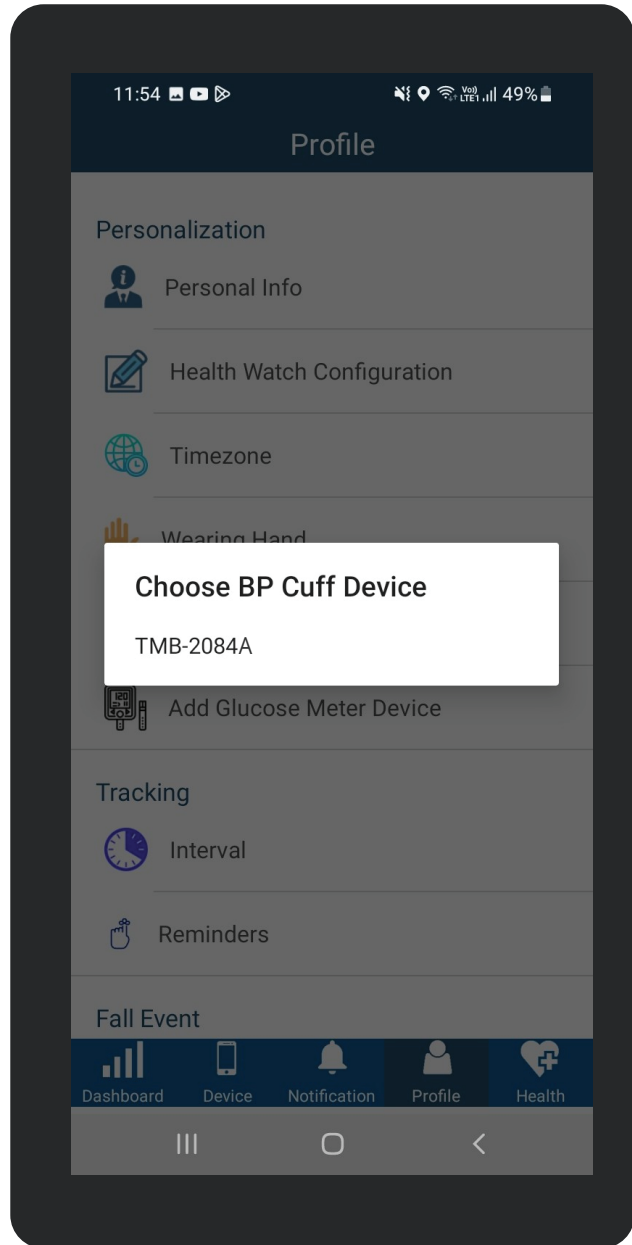
Step 3.

Press profile, scroll down and press add BP Cuff while cuff monitor Bluetooth symbol blinking.



Step 4.

Press: TMB 2084A



The date and time will appear on the blood pressure monitor. This indicates it has connected successfully.

Our call center is available 24-7 and can be reached on 844-597-8753 should you need anything.



Your VIP smart band should be worn 24 hours a day, even in the shower. It is fully waterproof and will keep you safe in the event of a slip or fall.

Your band only needs charging every 3 days, but don't worry! We'll send you a low battery notification! Charging only takes 30 minutes and the charger is included in your kit. The band reports steps taken, heart rate, heart rate variability, as well as day and time.

Take your blood pressure daily

There is no need to find a pen and paper! Your Blood pressure monitor has been connected to your tablet! Your results go straight to the app on your tablet!

Keep your mini tablet charged in the stand (provided in your kit), at all times. A central place like the living room is advisable. When going to bed, simply take your tablet with you and plug into the nearest outlet to maintain charge to monitor spikes or falls during the night.



When going outside, simply take your mini tablet from the stand and place it into the VIP Remote Health cross-body bag. This maintains your connectivity and reports potential falls and spikes to your emergency contact list with a GPS locator map.

When you come home, simply place your mini tablet back in the stand and in the charger.



Please note that your VIP mini tablet comes with telemedicine capabilities allowing your emergency contacts, physician to reach out to you, in the event of an emergency.

We thank you for choosing VIP Remote Health, it is our pleasure to help keep you safe.

Our call center is available 24-7 and can be reached on (844)-597-8753 should you need anything.